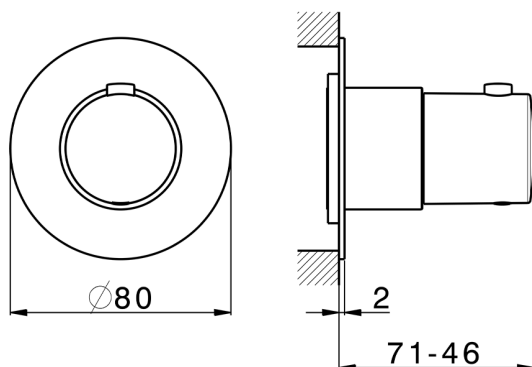


## Exposed part for thermostatic concealed valve PUSH&SHOWER\_PS0G1010



MODEL

**PS0G1010**

Exposed part for thermostatic concealed valve, without concealed valve, Ø80mm round plate, for Th. concealed valve with protection guard box

### AVAILABLE FINISHINGS

- |   |           |                           |
|---|-----------|---------------------------|
|    | <b>21</b> | 21 Chrome                 |
|    | <b>24</b> | 24 Gold                   |
|    | <b>26</b> | 26 Old Copper             |
|   | <b>2B</b> | 2B Polished Nickel        |
|  | <b>2F</b> | 2F Brushed Nickel         |
|  | <b>2W</b> | 2W Brushed Gold           |
|  | <b>3W</b> | 3W Brushed Black Titanium |
|  | <b>5G</b> | 5G Rose Gold              |
|  | <b>40</b> | 40 Matt Black             |



### Thermostatic

The Huber thermostatic is your personal water manager, helping you to handle, control and save water and energy.

### CHARACTERISTICS

Installation	<b>Concealed</b>
Required concealed parts	<b>ZB0G1000</b>



2026-02-04