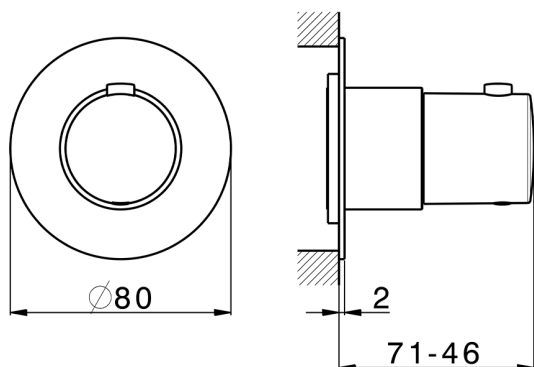


Exposed part for thermostatic concealed valve PUSH&SHOWER_PS0G1010



MODEL

PS0G1010

Exposed part for thermostatic concealed valve, without concealed valve, Ø80mm round plate, for Th. concealed valve with protection guard box

AVAILABLE FINISHINGS

- | | | |
|---|-----------|---------------------------|
|  | 21 | 21 Chrome |
|  | 24 | 24 Gold |
|  | 26 | 26 Old Copper |
|  | 2B | 2B Polished Nickel |
|  | 2F | 2F Brushed Nickel |
|  | 2W | 2W Brushed Gold |
|  | 3W | 3W Brushed Black Titanium |
|  | 5G | 5G Rose Gold |
|  | 40 | 40 Matt Black |



Thermostatic

The Huber thermostatic is your personal water manager, helping you to handle, control and save water and energy.

CHARACTERISTICS

Installation	Concealed
Required concealed parts	ZB0G1000



2026-02-04