

*Huber*  
AQUA EMOTIONS



chronos





# Aqua Emotions



## **The company**

*Fifty years of know-how in technology and manufacturing, focused on the most complex and sophisticated brassware product, the thermostatic mixer. These are the essential interpretative keys to HUBER, one of the leading manufacturers in Europe and by far the Italian leader in this industry.*

*From the beginning back in the mid Sixties with the Thetamix milestone, through the innovations made since 1987, the case history quickly unfolds with the design and manufacture of the first modern bathroom thermostatics with design and features suited to contemporary needs. Quickly becoming an important industrial business, HUBER has always believed in the total control of the product and its manufacturing process, which is fully integrated into its facilities.*

*A strong and skilled team of engineers, researchers and designers is dedicated to the continuous development of technology and design.*

## **L'azienda**

Cinquant'anni di know-how tecnologico e produttivo, incentrato sul prodotto di rubinetteria più complesso e sofisticato, il termostatico. Queste le prime chiavi interpretative di HUBER, tra i principali produttori in Europa e leader italiano indiscusso di questo settore.

Dagli esordi della metà degli anni Sessanta con il glorioso Thetamix, attraverso le innovazioni impresse a partire dal 1987, la case history si snoda rapidamente con la progettazione e fabbricazione dei primi veri termostatici da sala bagno con design e caratteristiche adatte alle esigenze contemporanee.

Divenuta rapidamente una realtà industriale importante, HUBER ha sempre creduto nel controllo totale del prodotto e del processo di fabbricazione, interamente integrato nei propri stabilimenti. Per lo sviluppo continuo della tecnologia e del design è attivo all'interno dell'azienda un forte e competente team di tecnici, ricercatori e progettisti.



## Huber lab

*In the aim of developing the objectives inherent to the spirit of the brand, HuberLab has born: a laboratory of creative interaction in which a team of engineers and creatives combines the experience on technologies and functionality with creativity and stylistic research, for an innovative approach to industrial design.*

*“Propose new scenarios, with the aim to excite through contemporary objects of high precision and strong identity; smart and efficient products, careful to ensure everyone a safe and easy access to the water resource, while respecting the planet.”*

Per sviluppare gli obiettivi connessi allo spirito dell'azienda, è nato HuberLab, un laboratorio di interazione creativa nel quale un variegato team di tecnici e di creativi combina l'esperienza sulle tecnologie e la funzionalità alla creatività e alla ricerca stilistica, per un approccio innovativo al design industriale.

“Proporre nuovi scenari, con l'obiettivo di emozionare attraverso oggetti contemporanei di alta precisione e con una forte identità, prodotti smart ed efficienti, attenti a garantire a tutti un accesso sicuro e facile alla risorsa acqua, nel rispetto del pianeta.”





## *Function and aesthetics.*

*In "pure art", artworks such as paintings, poems and plays are created with the sole purpose of providing aesthetic experiences. In architecture and industrial design, objects are created with the intention of satisfying not only aesthetic criteria but also primarily of meeting needs related to use and function. HUBER products perfectly meet the needs for aesthetics and performance, for long-term reliability and effective performance. Just like the best creations in nature.*

## Funzionalità ed estetica.

In "arte pura", creazioni come dipinti, poesie, melodie sono composte con il solo scopo di offrire esperienze estetiche. In architettura e industrial design, gli oggetti sono creati con l'obiettivo di soddisfare non solo criteri estetici, ma anche, principalmente, esigenze di utilità concreta e funzionalità pratica. I prodotti HUBER combinano efficacemente le esigenze di estetica e funzionalità, per una performance efficace e un'affidabilità duratura.



## ***A better way to experience water***

*At the heart of our thinking is the belief that there is a better way to experience water.*

*It goes beyond excellent design, to incorporate smart thinking that anticipates people's needs and allows the product to deliver high performance in a safe and reliable way. At HUBER, special attention is given to an overall approach to the user, water, energy, resources, and environmental protection.*

*No matter whether it's for fun or relax, for care, to drink or simply to make use of water: apart from their precise water control, HUBER products provide the best functions and technologies available for a pleasant and responsible relationship with water.*

*Discover a better way to experience water!*

## **Un modo migliore di vivere l'acqua**

Al centro del nostro pensiero è radicata la convinzione che esiste un modo migliore di vivere l'acqua. Che va oltre l'eccellente design, per incorporare lo smart thinking che anticipa le aspettative delle persone e consente ai prodotti di garantire elevate prestazioni, in modo affidabile e sicuro. In HUBER, ulteriore speciale attenzione è focalizzata ad un approccio complessivo di attenzione all'utilizzatore, all'acqua, all'energia, alle risorse e all'ambiente. Non importa se per gioco o per relax, per cura, per bere o semplicemente per far uso dell'acqua: oltre al suo controllo preciso, i prodotti HUBER offrono le migliori tecnologie e funzionalità disponibili per un rapporto piacevole e responsabile con l'acqua.

Scopri un modo migliore di vivere l'acqua!





## ***Details are the essence of smart products***

*Design is about more than just making things attractive. It's about making them user friendly and functional in people's everyday lives. Refined details enrich the creations and define smart products.*

*Sometimes, when creativity meets engineering, results exceed all expectations.*

## **I dettagli sono l'essenza dei prodotti smart**

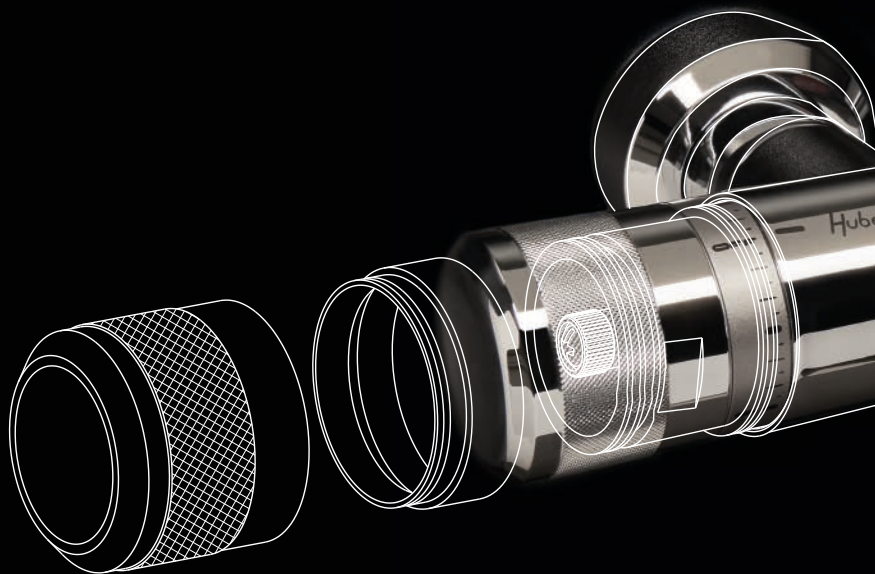
Il design è qualcosa di ben più del semplice rendere attraenti gli oggetti, consiste nel crearli facili all'uso e performanti nella vita quotidiana delle persone. Dettagli rifiniti arricchiscono le creazioni e definiscono i prodotti smart. A volte, quando la creatività si combina all'ingegnerizzazione, i risultati superano tutte le aspettative.

# The essence of technology

chronos

*When outstanding precision engineering is combined with sophisticated details for unique, uncompromised performance, an industry masterpiece is obtained. Swiss watch technical precision and highly sophisticated details are the inspiration for the most innovative thermostatic creation: CHRONOS. Thanks to its revolutionary planetary gear system, CHRONOS offers to double the temperature control precision. Absolute safe-touch construction and a distinctive look complete the outstanding portrait of this unique engineering masterpiece.*

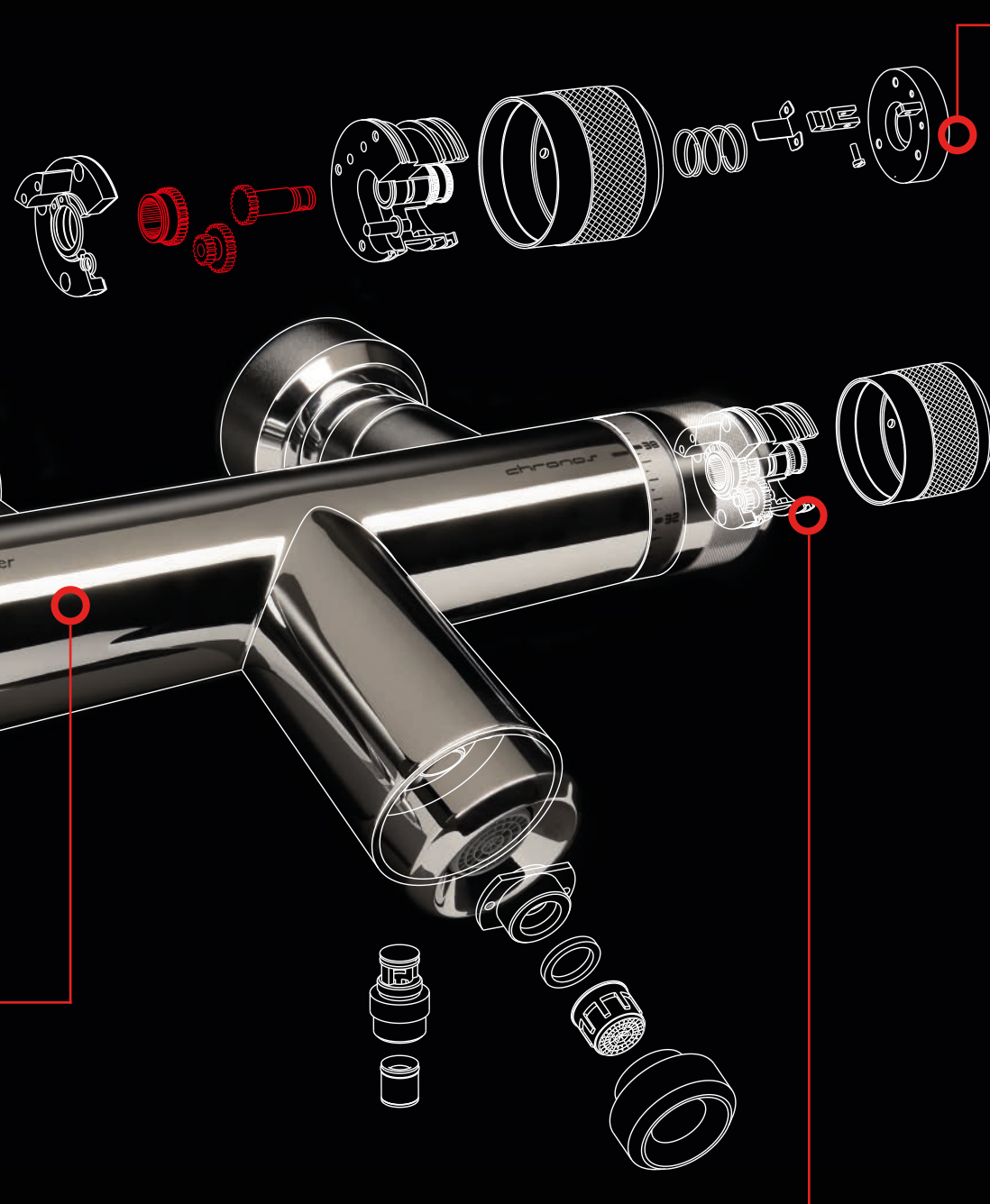
Quando un'eccezionale ingegneria di precisione si combina a dettagli sofisticati per prestazioni uniche e insuperabili, viene raggiunto un capolavoro dell'industria. Massima precisione meccanica e dettagli altamente sofisticati tipici dell'orologeria svizzera sono l'ispirazione per la più innovativa creazione termostatica: CHRONOS. Grazie al rivoluzionario sistema di ingranaggi a planetario, CHRONOS offre una raddoppiata precisione di regolazione della temperatura. La concezione assolutamente safe-touch e un look forte e identitario, completano il profilo di questo capolavoro unico della meccanica.



## Nice Feeling

*The temperature of the body of the Chronos mixer will always be optimal, both in the case of the passage of hot and cold water, as the two waters are totally isolated from the surface of the mixer.*

La temperatura del corpo del miscelatore Chronos sarà sempre ottimale, sia in caso di passaggio di acqua calda che di acqua fredda, in quanto le due acque sono totalmente isolate dalla superficie del miscelatore.



## Side Control

A lock button at 38°C is fitted as standard on all Huber thermostats above the temperature adjustment handle, while on the Chronos series we have introduced for the first time the innovative "Side Control" system, which avoids accidentally exceeding the temperature of 38°C having inserted the release button on the side of the handle.

Su tutti i termostatici Huber è montato di serie sopra la maniglia di regolazione della temperatura un tasto di blocco a 38 °C, mentre sulla serie Chronos abbiamo introdotto per la prima volta il sistema innovativo "Side Control", il quale evita di superare incidentalmente la temperatura di 38° C avendo inserito il pulsante di sblocco di lato alla maniglia.

## Smooth Control

*For showering to become an experience of complete relaxation, Huber has designed and patented the innovative "Smooth Control" system, whose complex watch-like gearwork allows the user to adjust the desired temperature to within half a degree, with a slight, smooth movement.*

Affinché la doccia possa essere un'esperienza di totale relax, la Huber ha progettato e brevettato, l'innovativo sistema "Smooth Control", che grazie ad un complesso sistema di ingranaggi simili a quelli di un orologio, permette ad ogni utilizzatore di selezionare la temperatura desiderata fino al mezzo grado, con un movimento morbido e semplicissimo.



chronos

## Water Saving

*Quick and accurate temperature selection with a simple, single adjustment of the handle.*

Selezione rapida e precisa della temperatura con un semplice gesto singolo di regolazione della manopola.

## Energy Saving

*Rapid selection and constant regulation of temperature provide the maximum degree of efficiency and the minimum consumption of energy.*

La selezione immediata e la regolazione costante della temperatura garantiscono il massimo grado di efficienza e il minimo consumo di energia.



## Control & Safety

*Keeps selected temperature under constant control. Prevents to exceed 50 °C. Ensures that the flow of hot water is automatically and immediately blocked if cold water supply stops: an exclusive and unique safety feature.*

Mantiene la temperatura impostata sotto controllo permanente.

Evita di superare comunque i 50 °C. Garantisce il blocco automatico e immediato dell'acqua calda in caso di mancanza di quella fredda: una funzione di sicurezza esclusiva e unica.

**ehronos**

## Comfort & Relax

*No matter whether it's for fun, comfort or relax, for care or simply to have a shower, HUBER thermostatic technologies ensure a pleasant and responsible relationship with water. Discover a better way to experience water!*

Non importa se per gioco, confort o relax, per cura o semplicemente per una doccia, le tecnologie termostatiche HUBER garantiscono un rapporto piacevole e responsabile con l'acqua.

Scopri un modo migliore di vivere l'acqua!



*Thermostatic technology,  
unparalleled worldwide*

**La tecnologia termostatica  
unica al mondo**





**CR 151**  
Monocomando Lavabo  
Basin Mixer





**CR 354**  
Monocomando Lavabo  
Basin Mixer



**CR 151**  
Monocomando Lavabo  
Basin Mixer



**CR 551**  
Monocomando Lavabo  
Basin Mixer





**CR T2101**  
Termostatico Vasca  
Bath/S. Thermo



**CR 1910**  
Termostatico 2 Uscite  
2-Outlet Thermo



**CR 1964 1**  
Termostatico 2 Uscite  
2-Outlet Thermo









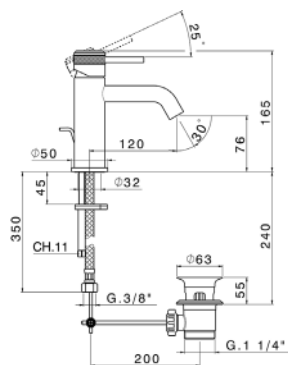
**CR C7801**  
CombiDoccia Termostatico  
Thermo CombiShower



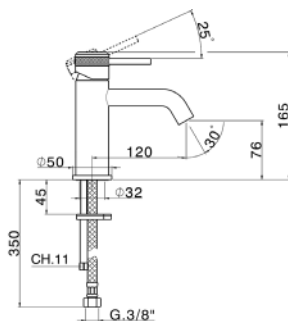
**CR 420**  
Completo Monocomando Vasca Free-Standing  
Free-Standing Bath/S. Mixer Set



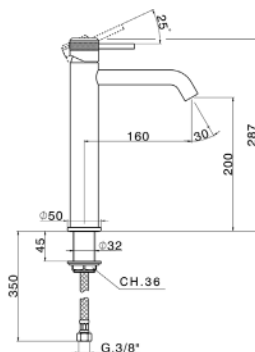
*Products  
and  
Accessories*



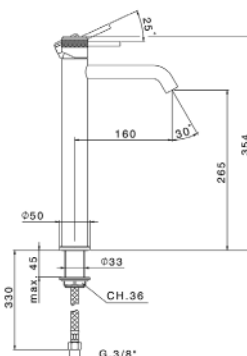
**CR 001510**  
 Monocomando Lavabo  
 Basin Mixer  
 Mitigeur Lavabo



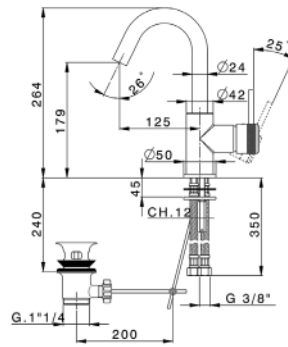
**CR 001540**  
 Monocomando Lavabo  
 Basin Mixer  
 Mitigeur Lavabo



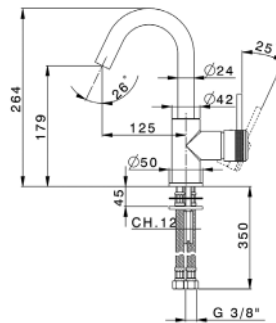
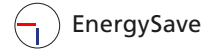
**CR 003540**  
 Monocomando Lavabo  
 Basin Mixer  
 Mitigeur Lavabo



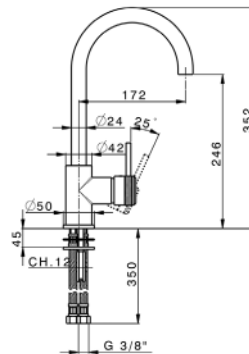
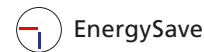
**CR 004540**  
 Monocomando Lavabo  
 Basin Mixer  
 Mitigeur Lavabo



**CR 000475**  
Monocomando Lavabo  
Basin Mixer  
Mitigeur Lavabo

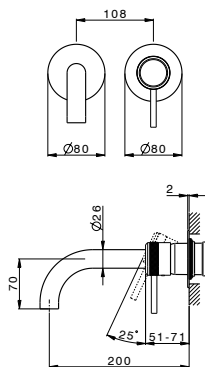


**CR 000485**  
Monocomando Lavabo  
Basin Mixer  
Mitigeur Lavabo



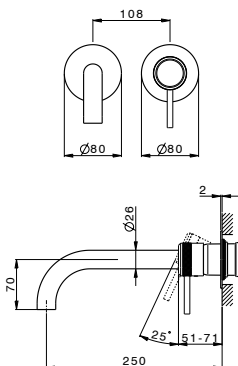
**CR 000535**  
Monocomando Lavabo  
Basin Mixer  
Mitigeur Lavabo





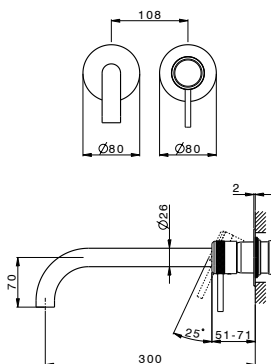
**CR 00551D**

Parte Esterna Monocomando Lavabo  
 Basin Mixer Exposed Part  
 Partie Apparente Mitigeur Lavabo



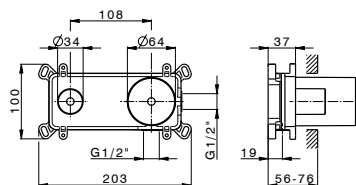
**CR 00551E**

Parte Esterna Monocomando Lavabo  
 Basin Mixer Exposed Part  
 Partie Apparente Mitigeur Lavabo



**CR 00551F**

Parte Esterna Monocomando Lavabo  
 Basin Mixer Exposed Part  
 Partie Apparente Mitigeur Lavabo

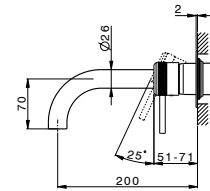
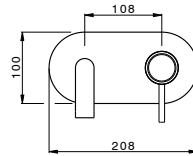


**ZB 002450**

Parte Incasso Monocomando Lavabo  
 Basin Mixer Concealed Part  
 Partie Encastrée Mitigeur Lavabo

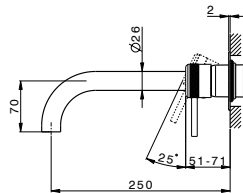
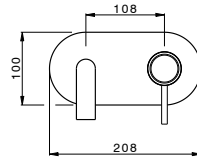
**EasyBox**





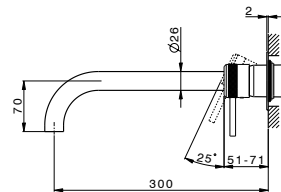
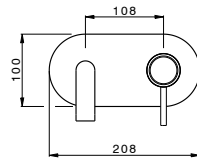
**CR 00551A**

Parte Esterna Monocomando Lavabo  
 Basin Mixer Exposed Part  
 Partie Apparente Mitigeur Lavabo



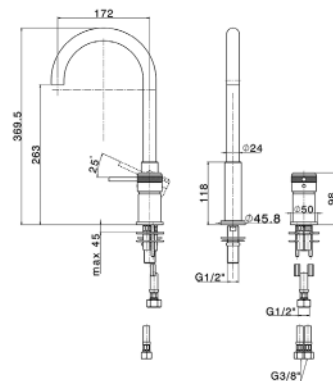
**CR 00551B**

Parte Esterna Monocomando Lavabo  
 Basin Mixer Exposed Part  
 Partie Apparente Mitigeur Lavabo



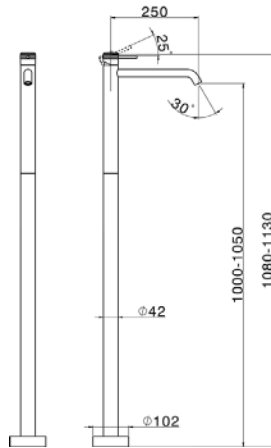
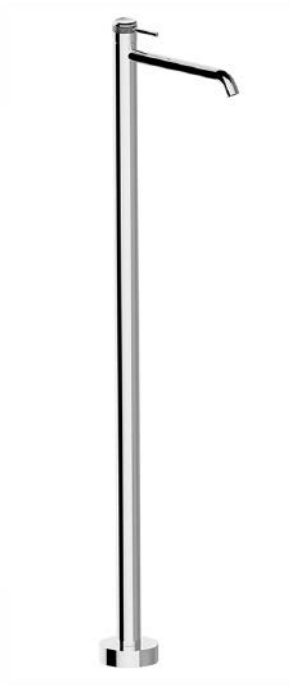
**CR 00551C**

Parte Esterna Monocomando Lavabo  
 Basin Mixer Exposed Part  
 Partie Apparente Mitigeur Lavabo



**CR 006510**

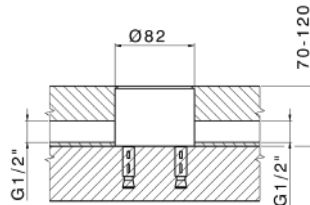
Monocomando Lavabo  
 Basin Mixer  
 Mitigeur Lavabo



**CR 014510**

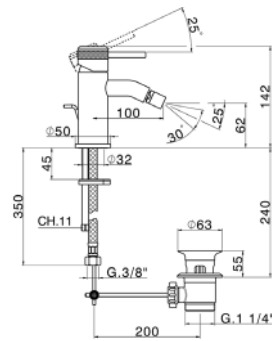
Parte Esterna Monocomando Lavabo Free-Standing  
Free-Standing Basin Mixer Exposed Part  
Partie Apparente Mitigeur Lavabo Free-Standing

Vedi/See/Voir ZB 004510

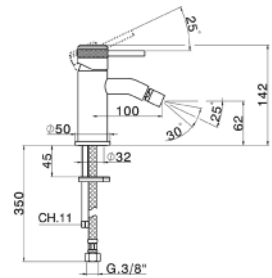


**ZB 004510**

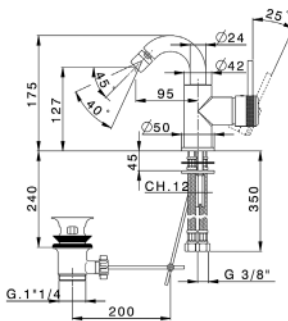
Parte Incasso Monocomando Free-Standing  
Free-Standing Mixer Concealed Part  
Partie Encastrée Mitigeur Free-Standing



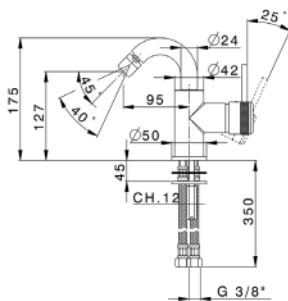
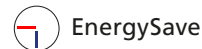
**CR 001550**  
Monocomando Bidet  
Bidet Mixer  
Mitigreur Bidet



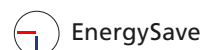
**CR 001560**  
Monocomando Bidet  
Bidet Mixer  
Mitigreur Bidet

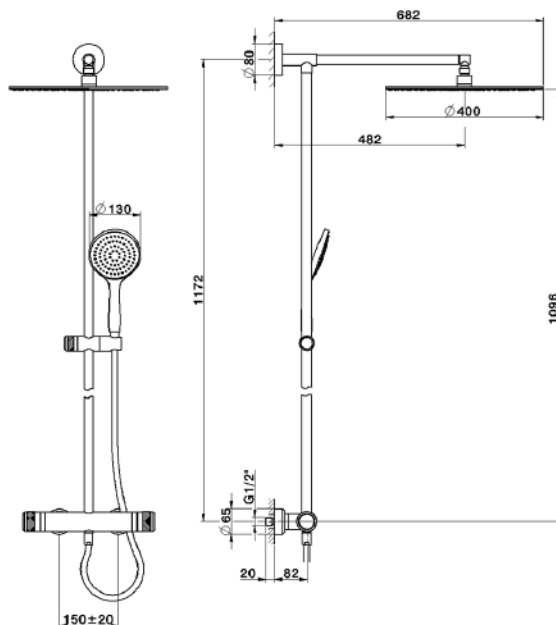



**CR 002555**  
Monocomando Bidet  
Bidet Mixer  
Mitigreur Bidet

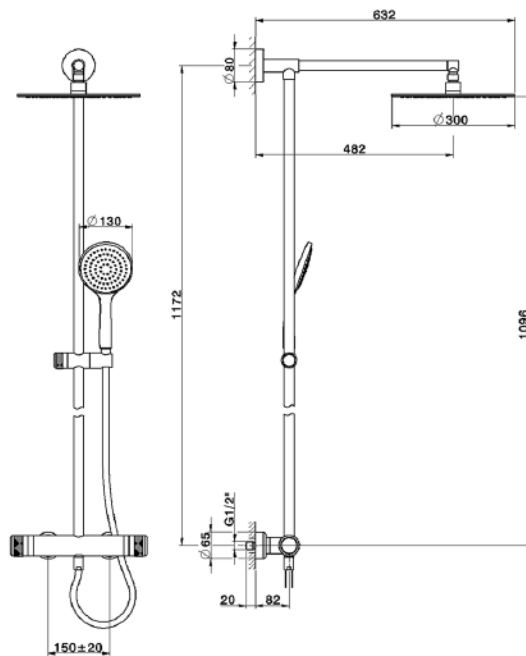



**CR 002565**  
Monocomando Bidet  
Bidet Mixer  
Mitigreur Bidet

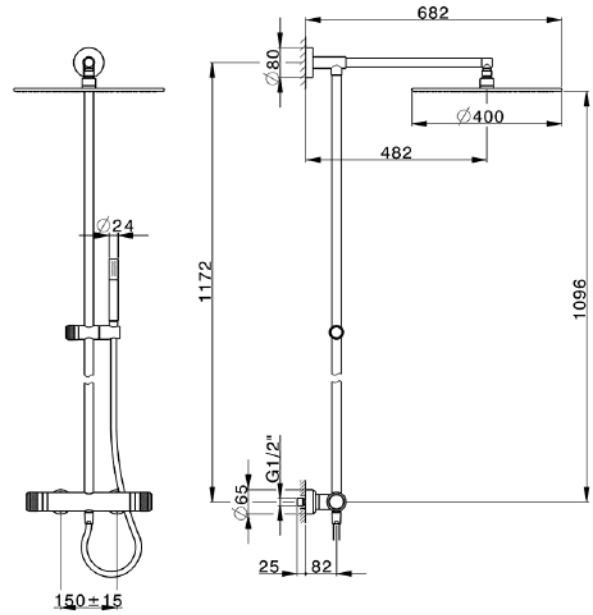




**CR C78010**  Chronos Technology  
 CombiDoccia Termostatico  
 Thermo CombiShower  
 CombiDouche Thermo



**CR C78020**  Chronos Technology  
 CombiDoccia Termostatico  
 Thermo CombiShower  
 CombiDouche Thermo



**CR C78030**

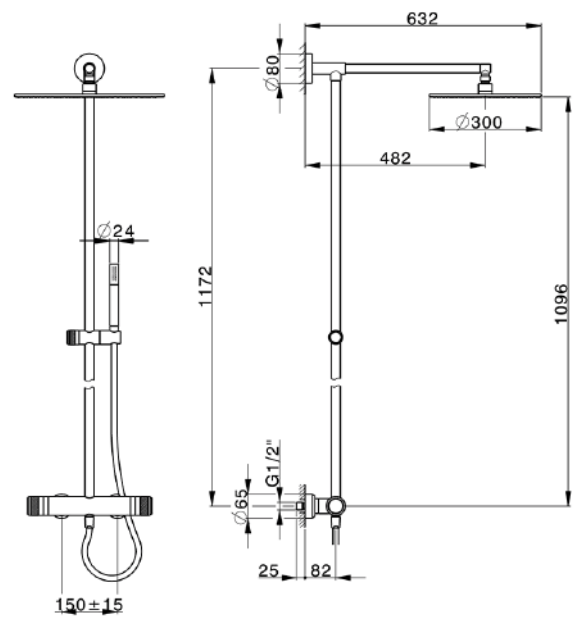


Chronos Technology

CombiDoccia Termostatico

Thermo CombiShower

CombiDouche Thermo



**CR C78040**

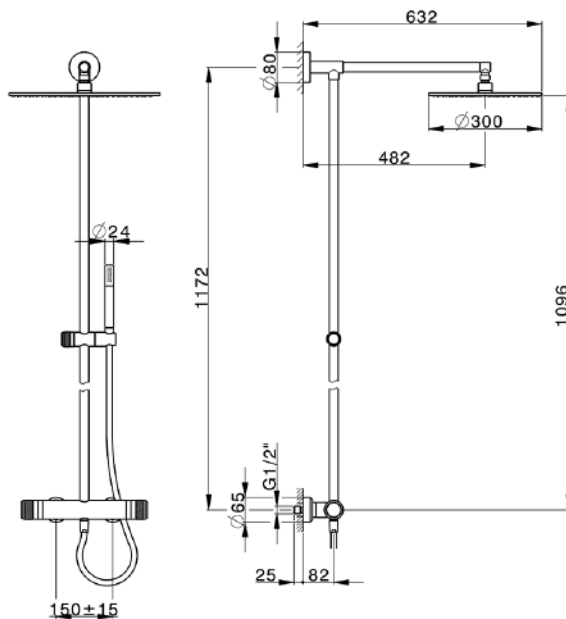



Chronos Technology

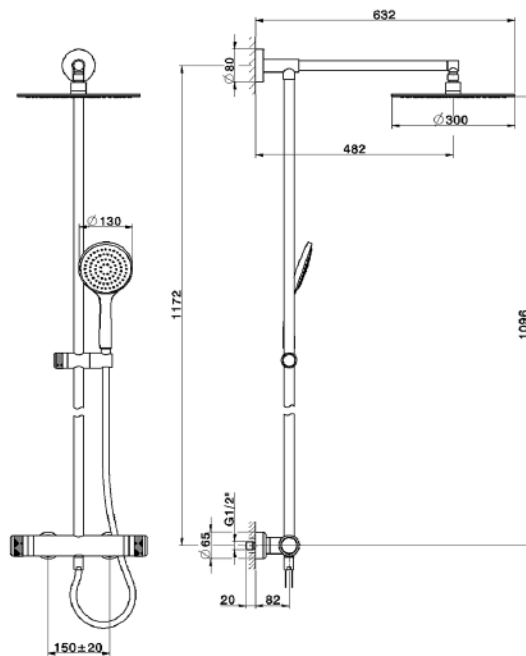
CombiDoccia Termostatico


Thermo CombiShower

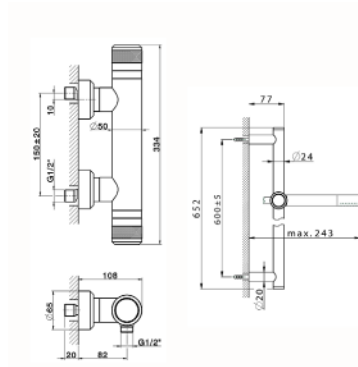
CombiDouche Thermo



**CR C78050**  Chronos Technology  
 CombiDoccia Termostatico  
 Thermo CombiShower  
 CombiDouche Thermo



**CR C78060**  Chronos Technology  
 CombiDoccia Termostatico  
 Thermo CombiShower  
 CombiDouche Thermo

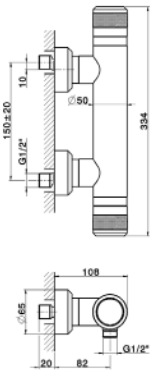


### CR S01010



Chronos Technology

Completo Termostatico Doccia  
Thermo Shower Set  
Ensemble Thermo Douche

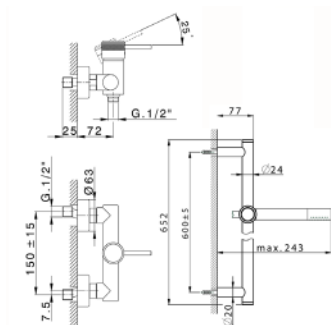


### CR T01010



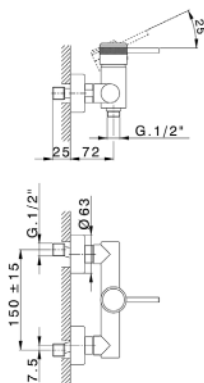
Chronos Technology

Termostatico Doccia  
Shower Thermo  
Thermo Douche



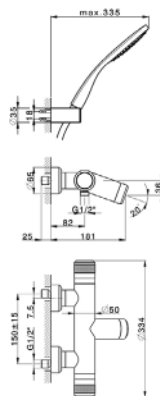
### CR 000460

Completo Monocomando Doccia  
Shower Mixer Set  
Ensemble Mitigeur Douche



### CR 000440

Monocomando Doccia  
Shower Mixer  
Mitigeur Douche

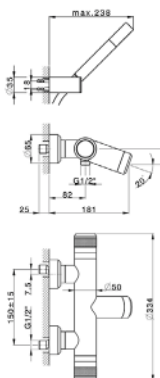


**CR D21010**



Chronos Technology

Completo Termostatico Vasca  
Thermo Bath/S. Set  
Ensemble Thermo Bain/D.

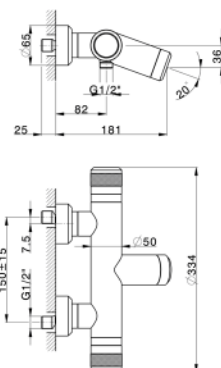


**CR D21020**



Chronos Technology

Completo Termostatico Vasca  
Thermo Bath/S. Set  
Ensemble Thermo Bain/D.



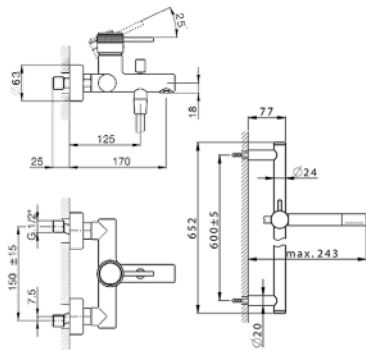
**CR T21010**



Chronos Technology

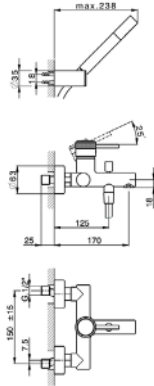
Termostatico Vasca  
Bath/S. Thermo  
Thermo Bain/D.





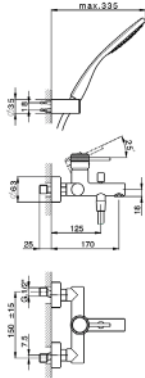
### CR 00060

Completo Monocomando Vasca  
Bath/S. Mixer Set  
Ensemble Mitigeur Bain/D.



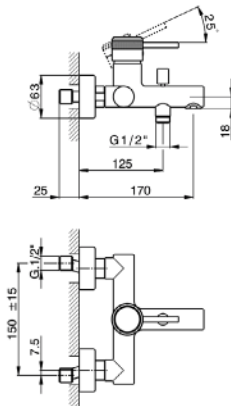
### CR 000126

Completo Monocomando Vasca  
Bath/S. Mixer Set  
Ensemble Mitigeur Bain/D.



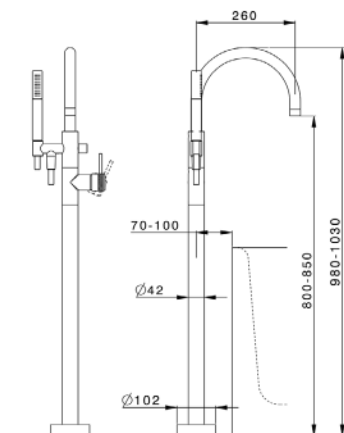
### CR 000123

Completo Monocomando Vasca  
Bath/S. Mixer Set  
Ensemble Mitigeur Bain/D.



### CR 000133

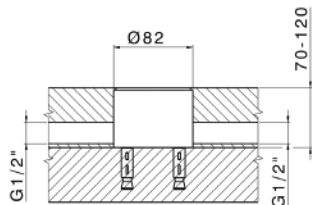
Monocomando Vasca  
Bath/S. Mixer  
Mitigeur Bain/D.



**CR 014200**

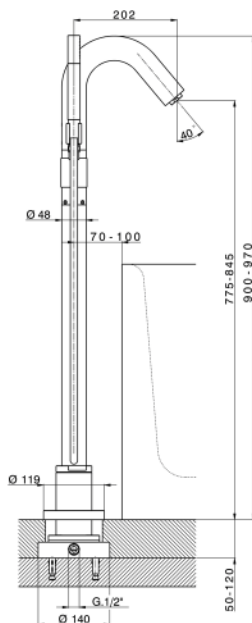
Parte Esterna Monocomando Vasca Free-Standing  
Free-Standing Bath/S. Mixer Exposed Part  
Partie Apparente Mitigeur Bain/D. Free-Standing

Vedi/See/Voir ZB 004510



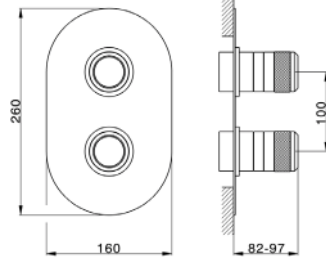
**ZB 004510**

Parte Incasso Monocomando Free-Standing  
Free-Standing Mixer Concealed Part  
Partie Encastrée Mitigeur Free-Standing



**CR 004202**

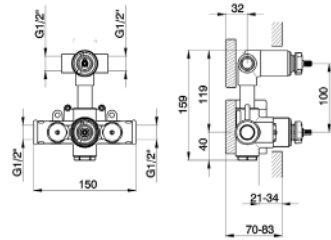
Completo Monocomando Vasca Free-Standing  
Free-Standing Bath/S. Mixer Set  
Ensemble Mitigeur Bain/D. Free-Standing



### CR 019100

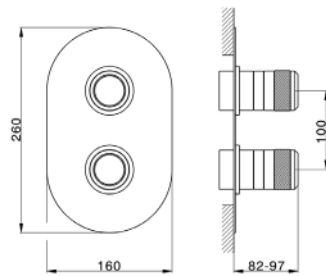


Parte Esterna Termostatico 2 Uscite  
2-Outlet Thermo Exposed Part  
Partie Décor Thermo 2 Sorties

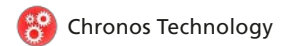


### ZB 019100

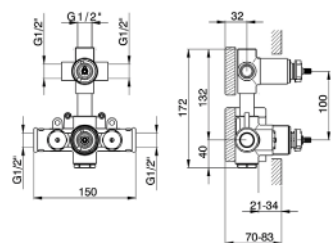
Parte Incasso Termostatico 2 Uscite  
2-Outlet Thermo Concealed Part  
Partie Encastrée Thermo 2 Sorties



### CR 019200

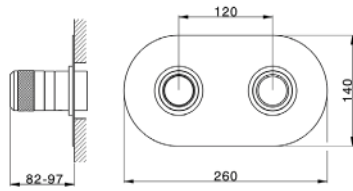


Parte Esterna Termostatico 3 Uscite  
3-Outlet Thermo Exposed Part  
Partie Décor Thermo 3 Sorties



### ZB 019100

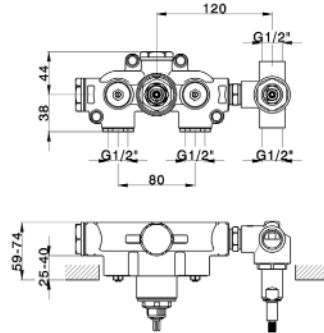
Parte Incasso Termostatico 3 Uscite  
3-Outlet Thermo Concealed Part  
Partie Encastrée Thermo 3 Sorties



**CR 019140**

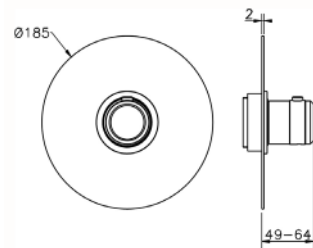


Parte Esterna Termostatico 2 Uscite  
2-Outlet Thermo Exposed Part  
Partie Décor Thermo 2 Sorties



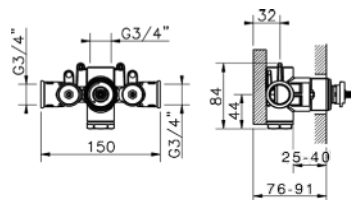
**ZB 019140**

Parte Incasso Termostatico 2 Uscite  
2-Outlet Thermo Concealed Part  
Partie Encastrée Thermo 2 Sorties



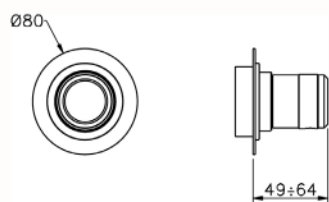
**CR 007200**

Parte Esterna Termostatico 3/4"  
3/4" Thermo Exposed Part  
Partie Décor Thermo 3/4"



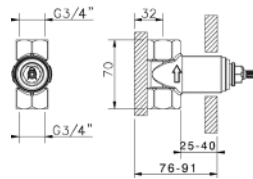
**ZB 007221**

Parte Incasso Termostatico 3/4"  
3/4" Thermo Concealed Part  
Partie Encastrée Thermo 3/4"



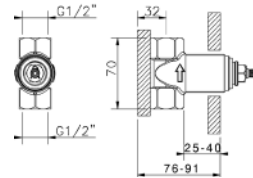
**CR 003310**

Parte Esterna Rubinetto  
Stopvalve Exposed Part  
Partie Décor Robinet



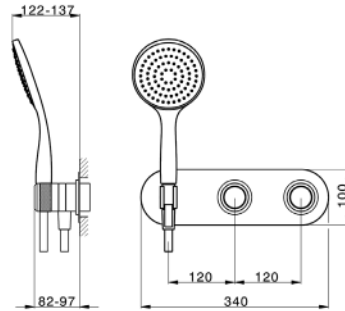
**ZB 003330**

Parte Incasso Rubinetto 3/4"  
3/4" Stopvalve Concealed Part  
Partie Encastrée Robinet 3/4"



**ZB 003340**

Parte Incasso Rubinetto 1/2"  
1/2" Stopvalve Concealed Part  
Partie Encastrée Robinet 1/2"

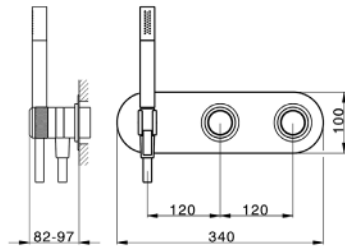


**CR 019640**



Chronos Technologys

Parte Esterna Termostatico 2 Uscite  
2-Outlet Thermo Exposed Part  
Partie Décor Thermo 2 Sorties

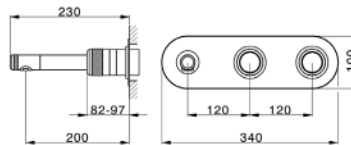


**CR 019641**



Chronos Technology

Parte Esterna Termostatico 2 Uscite  
2-Outlet Thermo Exposed Part  
Partie Décor Thermo 2 Sorties

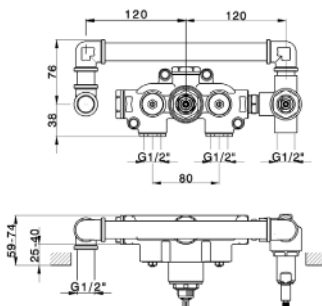


**CR 019340**



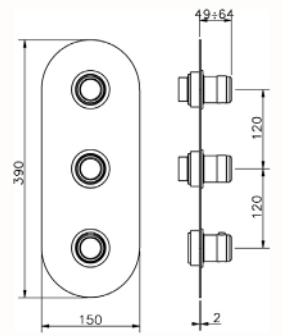
Chronos Technology

Parte Esterna Termostatico 2 Uscite  
2-Outlet Thermo Exposed Part  
Partie Décor Thermo 2 Sorties



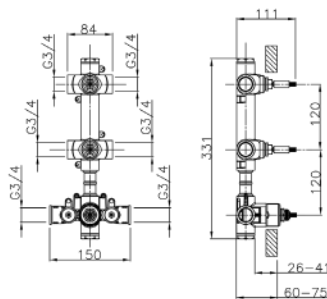
**ZB 019340**

Parte Incasso Termostatico 2 Uscite  
2-Outlet Thermo Concealed Part  
Partie Encastrée Thermo 2 Sorties



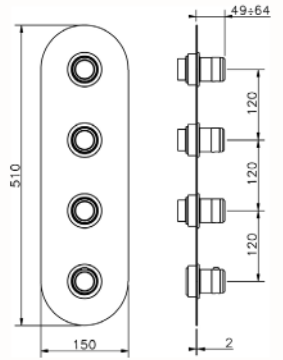
### CR 01V200

Parte Esterna Termostatico 2 Funzioni  
 2-Function Thermo Exposed Part  
 Partie Décor Thermo 2 Fonctions



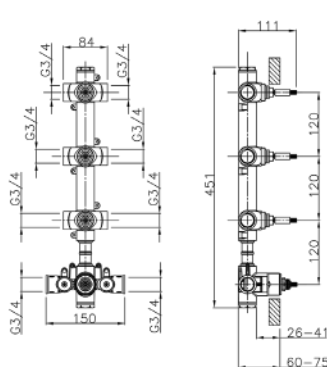
### ZB 01V200

Parte Incasso Termostatico 2 Funzioni  
 2-Function Thermo Concealed Part  
 Partie Encastrée Thermo 2 Fonctions



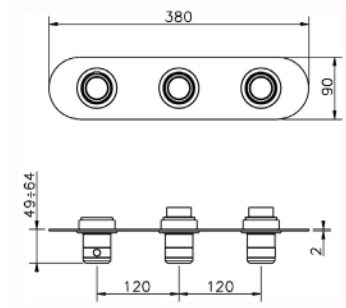
### CR 01V300

Parte Esterna Termostatico 3 Funzioni  
 3-Function Thermo Exposed Part  
 Partie Décor Thermo 3 Fonctions



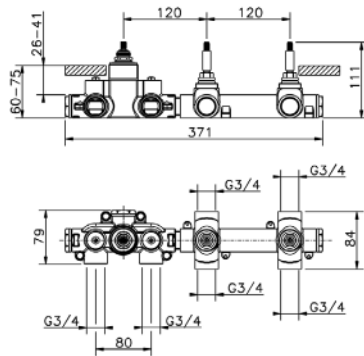
### ZB 01V300

Parte Incasso Termostatico 3 Funzioni  
 3-Function Thermo Concealed Part  
 Partie Encastrée Thermo 3 Fonctions



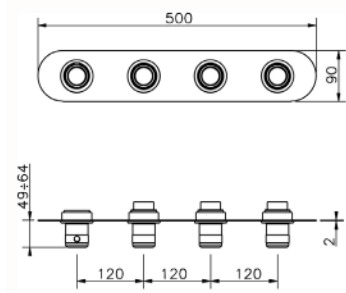
### CR 01R200

Parte Esterna Termostatico 2 Funzioni  
 2-Function Thermo Exposed Part  
 Partie Décor Thermo 2 Fonctions



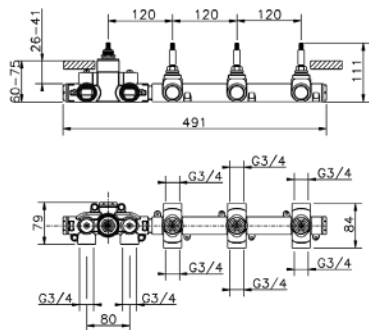
### ZB 01R200

Parte Incasso Termostatico 2 Funzioni  
 2-Function Thermo Concealed Part  
 Partie Encastrée Thermo 2 Fonctions



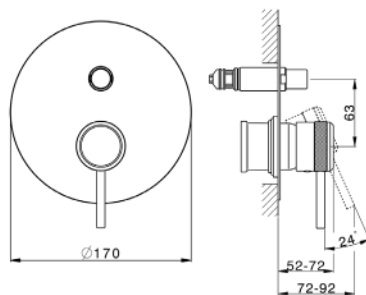
### CR 01R300

Parte Esterna Termostatico 3 Funzioni  
 3-Function Thermo Exposed Part  
 Partie Décor Thermo 3 Fonctions



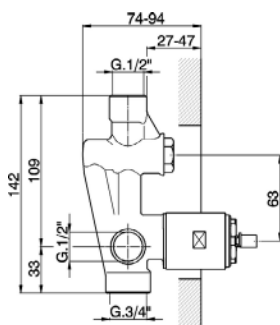
### ZB 01R300

Parte Incasso Termostatico 3 Funzioni  
 3-Function Thermo Concealed Part  
 Partie Encastrée Thermo 3 Fonctions



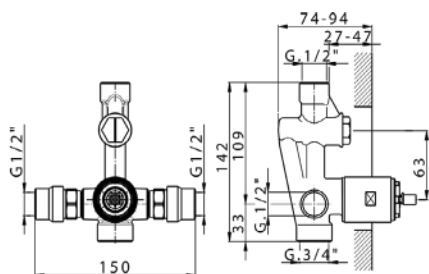
**CR 002100**

Parte Esterna Monocomando 2 Uscite  
2-Outlet Mixer Exposed Part  
Partie Décor Mitigeur 2 Sorties



**ZB 005210**

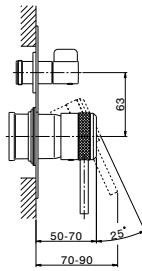
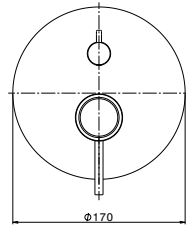
Parte Incasso Monocomando 2 Uscite  
2-Outlet Mixer Concealed Part  
Partie Encastrée Mitigeur 2 Sorties



**ZB 005211**

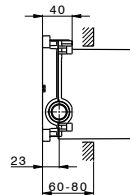
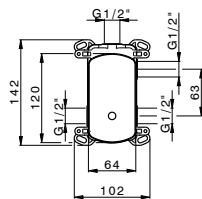
Parte Incasso Monocomando 2 Uscite con Silenziatori  
2-Outlet Mixer Concealed Part with Noise Reducers  
Partie Encastrée Mitigeur 2 Sorties avec Silencieux





### CR 002300

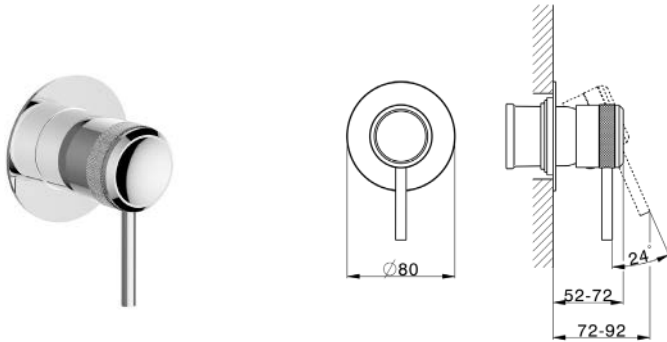
Parte Esterna Monocomando 2 Uscite  
2-Outlet Mixer Exposed Part  
Partie Décor Mitigeur 2 Sorties



### ZB 000230

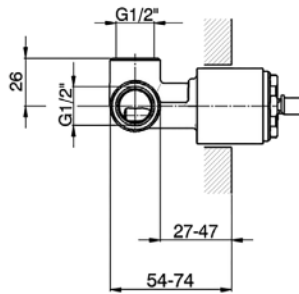
Parte Incasso Monocomando 2 Uscite  
2-Outlet Mixer Concealed Part  
Partie Encastrée Mitigeur 2 Sorties

**EasyBox**



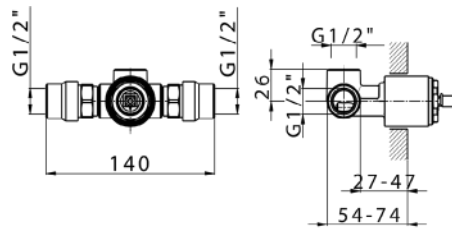
**CR 003000**

Parte Esterna Monocomando Doccia  
 Shower Mixer Exposed Part  
 Partie Décor Mitigeur Douche



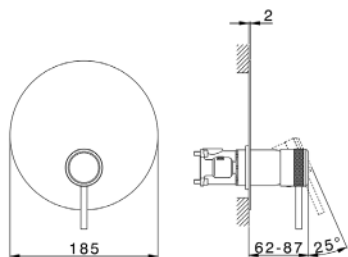
**ZB 005300**

Parte Incasso Monocomando Doccia  
 Shower Mixer Concealed Part  
 Partie Encastrée Mitigeur Douche



**ZB 005301**

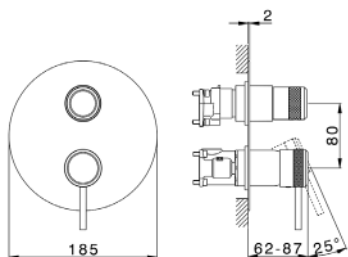
Parte Incasso Monocomando Doccia con Silenziatori  
 Shower Mixer Concealed Part with Noise Reducers  
 Partie Encastrée Mitigeur Douche avec Silencieux



### CR OBM010

Parte Esterna Monocomando 1 Uscita  
1-Outlet Mixer Exposed Part  
Partie Décor Mitigeur 1 Sortie

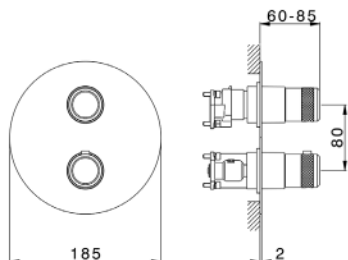
Vedi/See/Voir **ONE Box**



### CR OBM030

Parte Esterna Monocomando 2/3 Uscite  
2/3 Outlet Mixer Exposed Part  
Partie Décor Mitigeur 2/3 Sorties

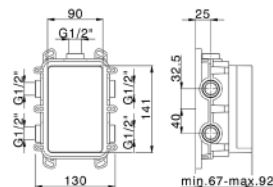
Vedi/See/Voir **ONE Box**



### CR OBT030

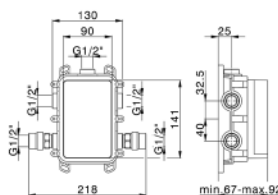
Parte Esterna Termostatico 1/2/3 Uscite  
1/2/3 Outlet Thermo Exposed Part  
Partie Décor Thermo 1/2/3 Sorties

Vedi/See/Voir **ONE Box**



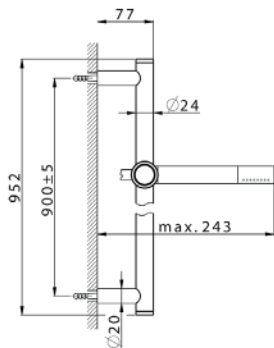
### ZB 00B030

Parte Incasso ONE Box  
ONE Box Concealed Part  
Partie Encastrée ONE Box



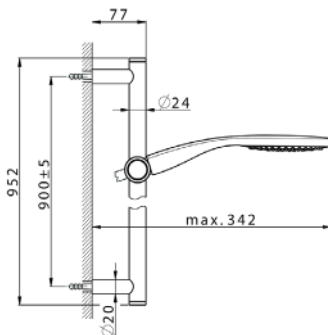
### ZB 00B031

Parte Incasso ONE Box con Silenziatori  
ONE Box Concealed Part with Noise Reducers  
Partie Encastrée ONE Box avec Silencieux



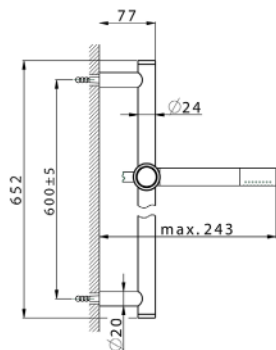
**CR 003110**

Completo Doccia Saliscendi 90 cm  
90 cm Slide Rail Shower Set  
Ensemble Barre de Douche 90 cm



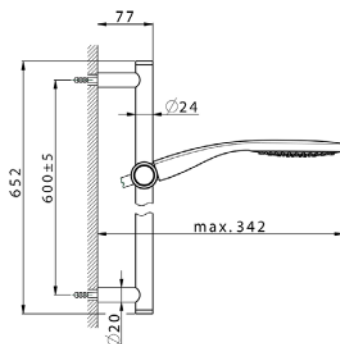
**CR 003111**

Completo Doccia Saliscendi 90 cm  
90 cm Slide Rail Shower Set  
Ensemble Barre de Douche 90 cm



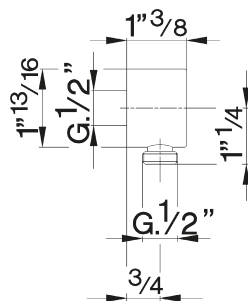
**CR 003112**

Completo Doccia Saliscendi 60 cm  
60 cm Slide Rail Shower Set  
Ensemble Barre de Douche 60 cm

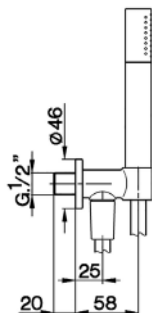


**CR 003113**

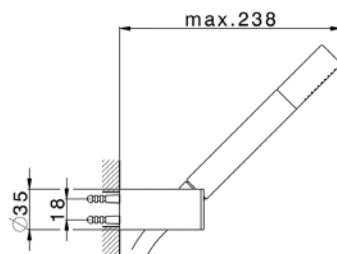
Completo Doccia Saliscendi 60 cm  
60 cm Slide Rail Shower Set  
Ensemble Barre de Douche 60 cm



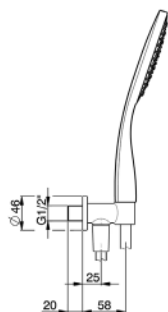
**SS 017300**  
Presad'Acqua  
Wall Elbow  
Coude Mural



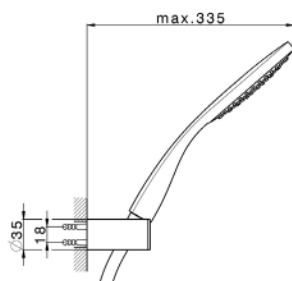
**SS 018813**  
Completo Doccia con Presad'Acqua  
Shower Set on Wall Elbow  
Ensemble de Douche sur Coude Mural



**SS 018360**  
Completo Doccia  
Shower Set  
Ensemble de Douche



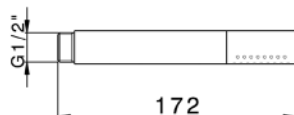
**SS 018820**  
Completo Doccia con Presad'Acqua  
Shower Set on Wall Elbow  
Ensemble de Douche sur Coude Mural



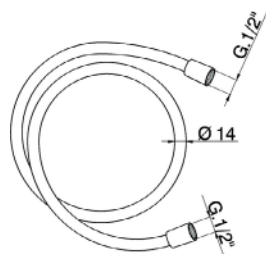
**SS 018350**  
Completo Doccia  
Shower Set  
Ensemble de Douche



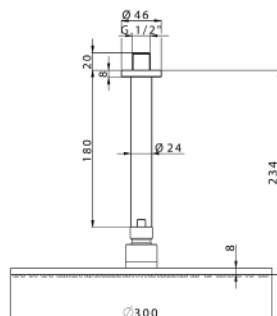
**SS 014330**  
 Doccetta  
 Hand Shower  
 Douchette à Main



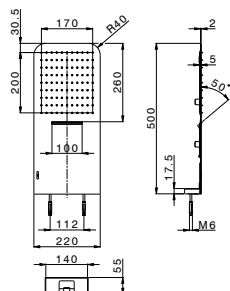
**SS 014090**  
 Doccetta  
 Hand Shower  
 Douchette à Main



**ZB 009040**  
 Flessibile Doccia SUPREME  
 SUPREME Shower Hose  
 Flexible de Douche SUPREME



**SS 013700**  
 Braccio e Soffione Doccia  
 Shower Arm & Head  
 Bras et Tête de Douche

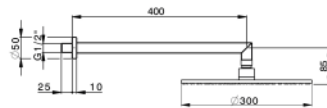


**ZS 122110**  
 Soffione Doccia 2 Funzioni: Pioggia/Cascata  
 2-Function Shower Head: Rain/Waterfall  
 Douche de Tête 2 Fonctions: Pluie/Cascade



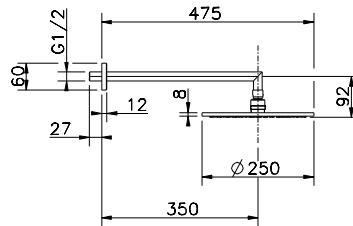
### SS 013610

Braccio e Soffione Doccia  
Shower Arm & Head  
Bras et Tête de Douche



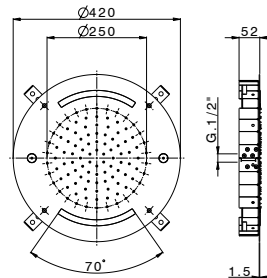
### SS 013620

Braccio e Soffione Doccia  
Shower Arm & Head  
Bras et Tête de Douche



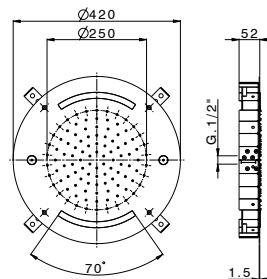
### SS 013630

Braccio e Soffione Doccia  
Shower Arm & Head  
Bras et Tête de Douche



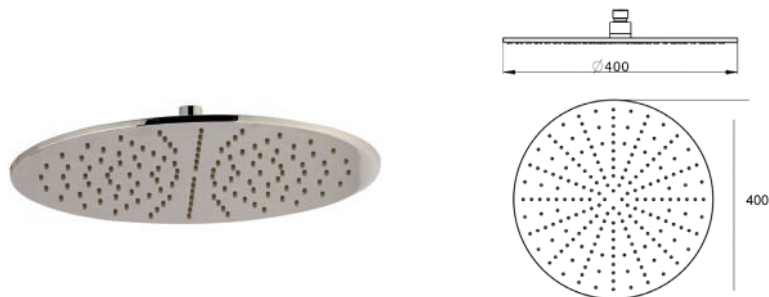
### ZS 1C0020

Soffione a Soffitto con Cromoterapia,  
Funzioni Pioggia, Nebulizzatore - Radiocomando  
Chromotherapy Ceiling Showerhead,  
Rain, Spraying Functions - Remote Control  
Pomme de Douche Plafond avec Chromothérapie,  
Fonctions Pluie, Nébuliseur - Télécommande

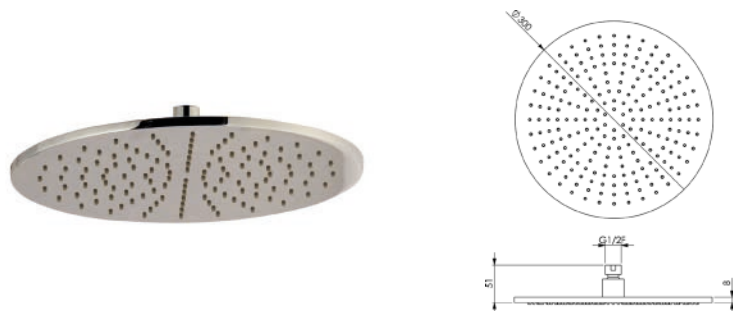


### ZS 1C0025

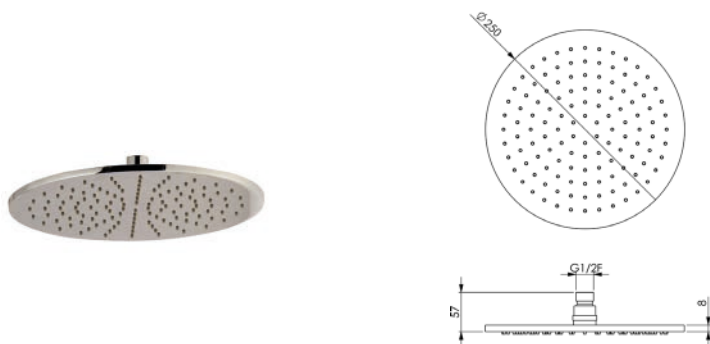
Soffione a Soffitto con Cromoterapia,  
Funzioni Pioggia, Nebulizzatore - Comando a Incasso  
Chromotherapy Ceiling Showerhead,  
Rain, Spraying Functions - Built-in Control  
Pomme de Douche Plafond avec Chromothérapie,  
Fonctions Pluie, Nébuliseur - Commande Intégrée



**SS 016370**  
Soffione Doccia  
Shower Head  
Douche de Tête



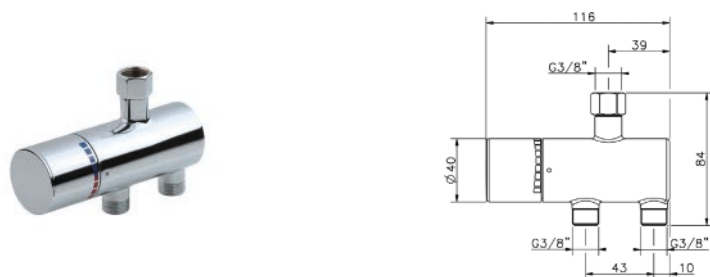
**SS 016330**  
Soffione Doccia  
Shower Head  
Douche de Tête



**SS 016350**  
Soffione Doccia  
Shower Head  
Douche de Tête

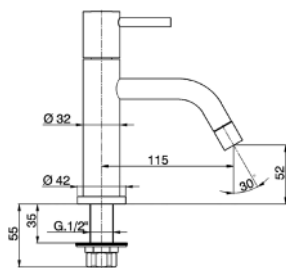


**SS 015090**  
Soffione Laterale  
Body Jet  
Buse Murale

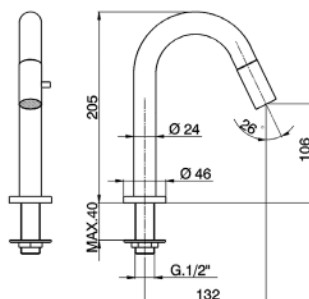


**TY T83010**  
Termostatico Sottolavabo  
Underbasin Thermo  
Thermo Sous Lavabo

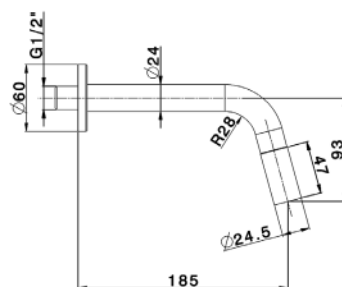




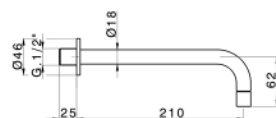
**CR 00090**  
Rubinetto Lavamani  
Pillar Tap  
Robinet Lave Main



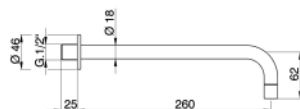
**CR 00091**  
Rubinetto Lavamani  
Pillar Tap  
Robinet Lave Main



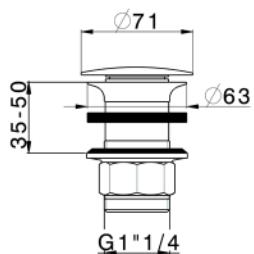
**CR 001420**  
Rubinetto Lavamani  
Pillar Tap  
Robinet Lave Main



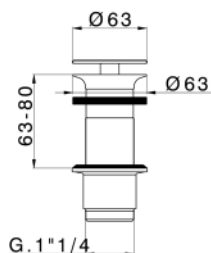
**ZB 002250**  
Bocca di Erogazione  
Filler Spout  
Bec Verseur



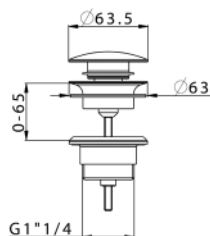
**ZB 002251**  
Bocca di Erogazione  
Filler Spout  
Bec Verseur



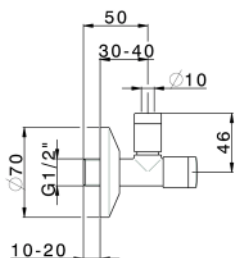
**ZB 001610**  
 Scarico Sempre Aperto  
 Open Flow Waste  
 Vidage Ouvert



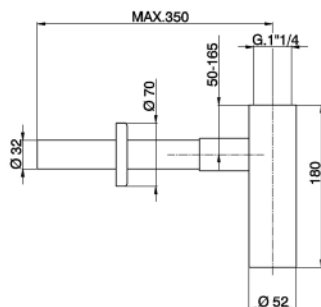
**ZB 001613**  
 Scarico Sempre Aperto  
 Open Flow Waste  
 Vidage Ouvert



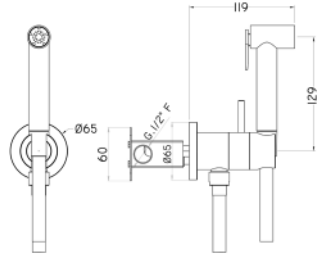
**ZB 001780**  
 Scarico Click-Clack  
 Click-Clack Waste  
 Vidage Click-Clack



**ZB 002900**  
 Rubinetto Filtro di Alimentazione  
 Angle Valve  
 Robinet à Equerre

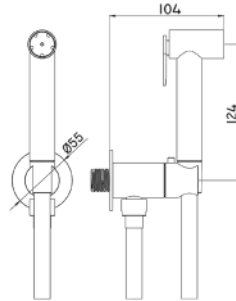


**ZB 004070**  
 Sifone  
 Siphon  
 Siphon



### TT 007945

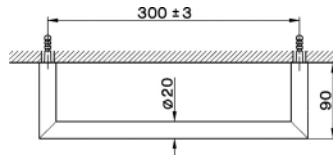
Set Miscelatore Doccetta Igienica  
Bidet Hand Shower Mixer Set  
Kit Mitigeur Douche d'Hygiène



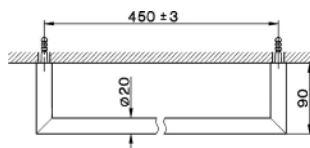
### TT 007920

Set Doccetta Idroscopino  
Toilet-Jet Hand Shower Set  
Kit Douche pour Cuvette

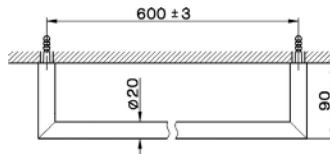




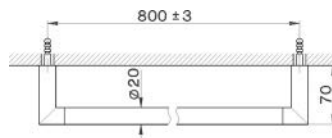
**SI 090100**  
Porta Salviette  
Towel Rail  
Porte-Serviette



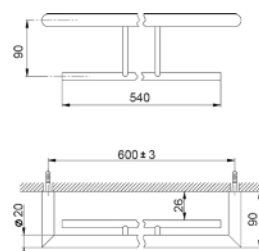
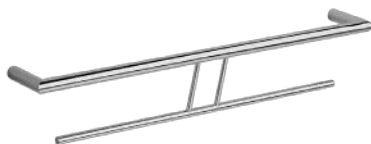
**SI 090101**  
Porta Salviette  
Towel Rail  
Porte-Serviette



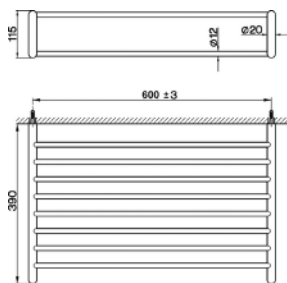
**SI 090102**  
Porta Salviette  
Towel Rail  
Porte-Serviette



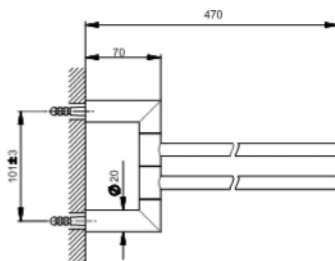
**SI 090103**  
Porta Salviette  
Towel Rail  
Porte-Serviette



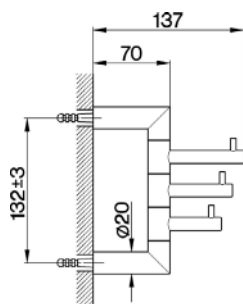
**SI 090200**  
Porta Salviette  
Towel Rail  
Porte-Serviette



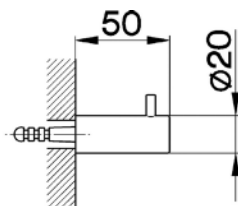
**SI 090300**  
Porta Salviette  
Towel Rail  
Porte-Serviette



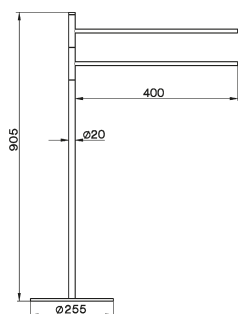
**SI 090210**  
Porta Salviette  
Towel Rail  
Porte-Serviette



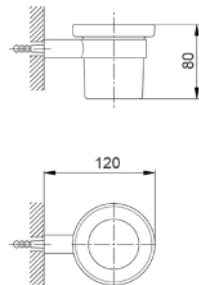
**SI 090700**  
Appendino Multiplo  
Multiple Hook  
Porte-Peignoir Multiple



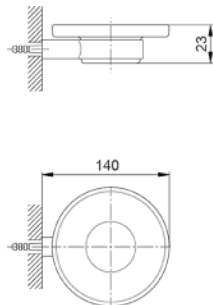
**SI 090710**  
Appendino  
Robe Hook  
Porte-Peignoir



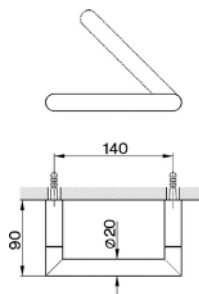
**SI 090910**  
Porta Salviette  
Free-Standing Towel Rail  
Porte-Serviette



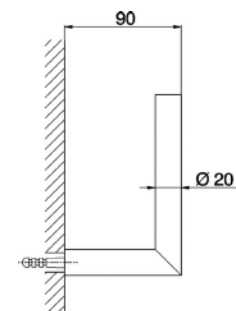
**SI 090500**  
Porta Bicchiera  
Toothbrush Holder  
Porte-Verre



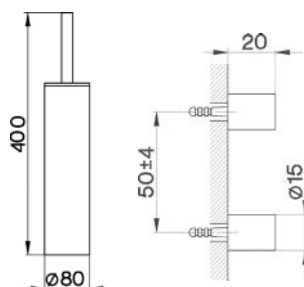
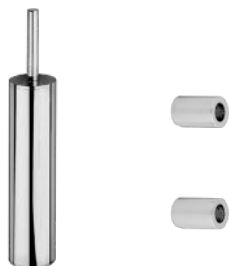
**SI 090600**  
Porta Sapone  
Soap Holder  
Porte-Savon



**SI 090400**  
Porta Rotolo  
Roll Holder  
Porte-Papier



**SI 090410**  
Porta Rotolo  
Roll Holder  
Porte-Papier



**SI 090650**  
Porta Scopino  
Brush Holder  
Porte-Brosse

**SI 090660**  
Kit Installazione a Muro  
Wall Fixing Kit  
Kit d'Installation Murale

*Finishes Programme.*

Programma Finiture.

*Classic Metals | Metalli Classici*



Chrome  
21



Brushed Nickel  
2F

*Special Metals | Metalli Speciali*



Black Titanium  
2Q





# *Credits.* Crediti.

*Text and Editing*

**HuberLab**

*Graphic Design and Layout*

**HuberLab**

*Photography*

**Dario De Sirianna**

**Marco Siracusano**

**Giuseppe Godi**

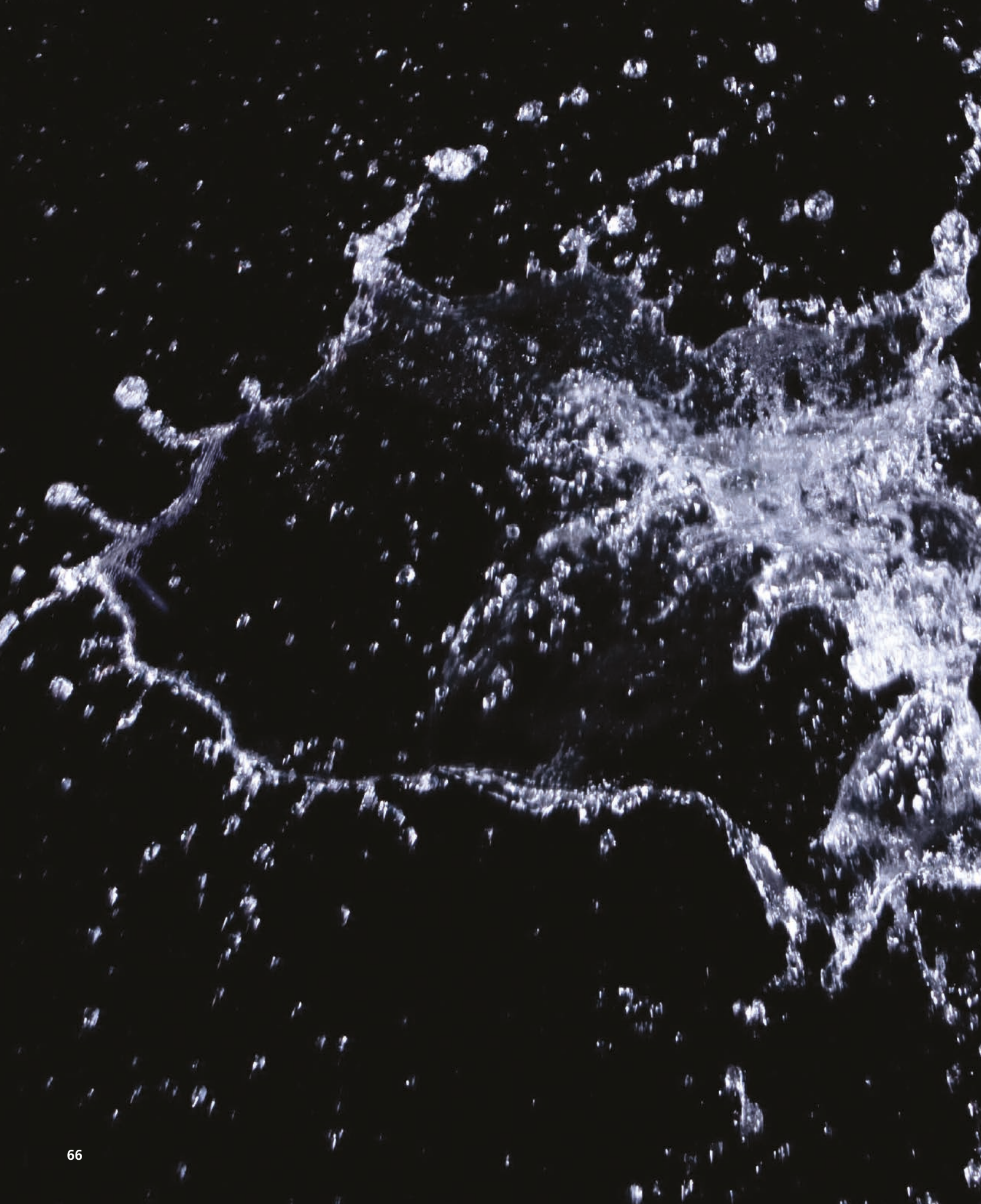
*Printing*

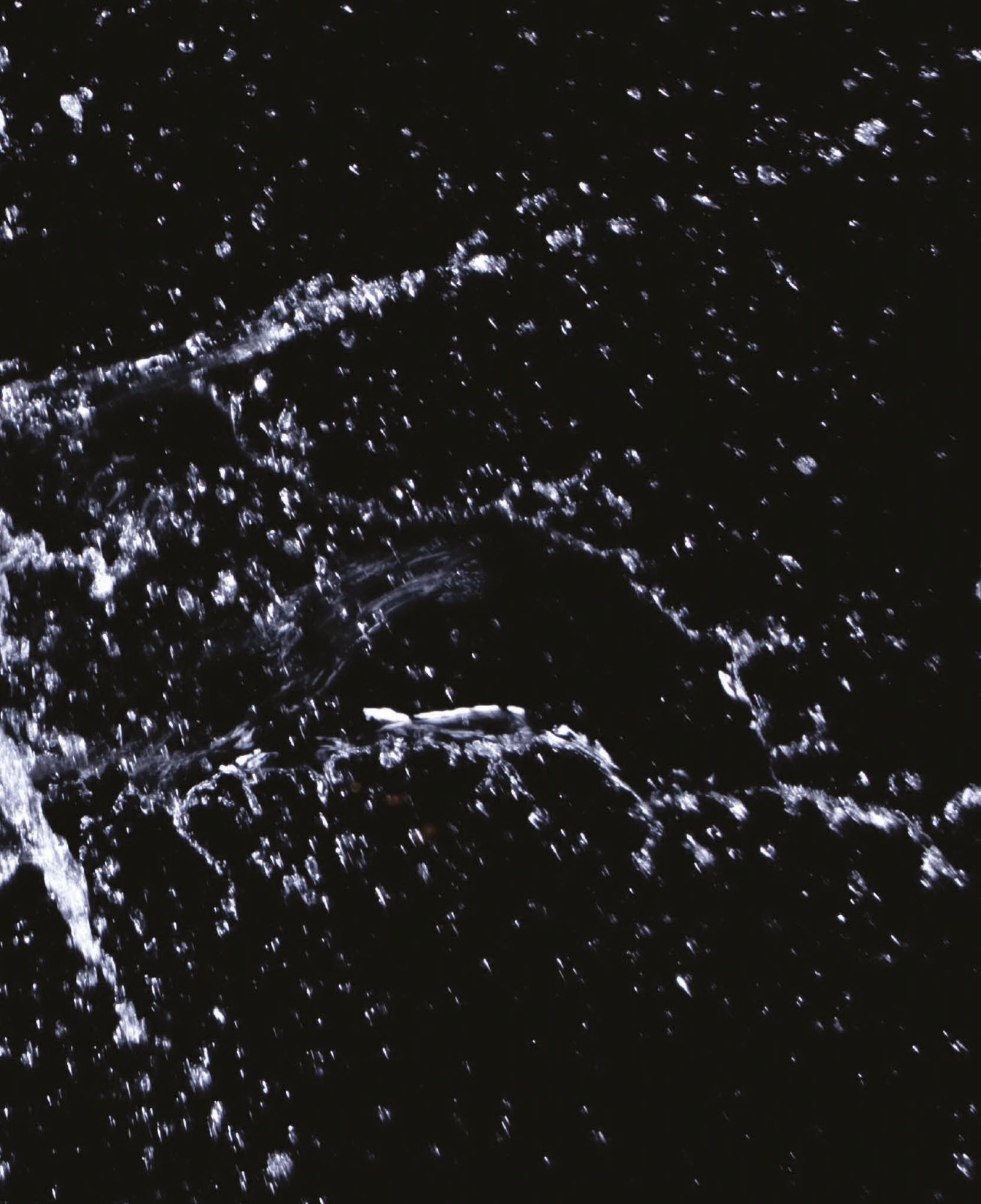
**Tipolitografia Testori**

*Thanks to*

**Godi Graniti**

Printed in Italy







Via Brughiere 50 - 28017 San Maurizio d'Opaglio - Italia

+39 0322 967783

huber@huberitalia.com

huberitalia.com

